



TRANSLINK INTERMODAL FACILITY

Newsletter No. 1 – August 2025

The TRANSLink Intermodal Facility (TIF) is a proposed intermodal facility in or adjacent to the TRANSLink Industrial Estate, which aims to integrate rail, road and air freight transports modes with logistical and value-adding industrial activities.

The proposed TRANSLink Intermodal Facility will enable efficient transfer of goods from one mode of transport to another, significantly enhancing access to interstate and overseas markets, particularly for perishable goods.

Northern Tasmania Development Corporation (NTDC) have now partnered with the Northern Midlands Council to deliver this project.

Feasibility study and business case

In May 2024, the Northern Midlands Council successfully obtained grant funding from the Australian Government Department of Infrastructure, Transport, Regional Development, and Communications to proceed with the preparation of a feasibility study and business case for the TRANSLink Intermodal Facility. This funding will also be used for early design work, agreement negotiations with service providers and to enable the securing of tenants for the proposed facility.

This process is an important part of the project, as we continue to invest in the growth of the TRANSLink precinct and provide the land and transport connections to support industrial and logistics uses. The industrial precinct is continuing to develop and is growing in response to strong demand across the region.

KEY BENEFITS

Once operational, this facility will generate a range of benefits to the community and will contribute to the Tasmanian economy by:

- » Improving tourism visitation
- » Improving freight movement efficiency and capacity
- » Reducing road congestion
- » Investment and employment opportunities

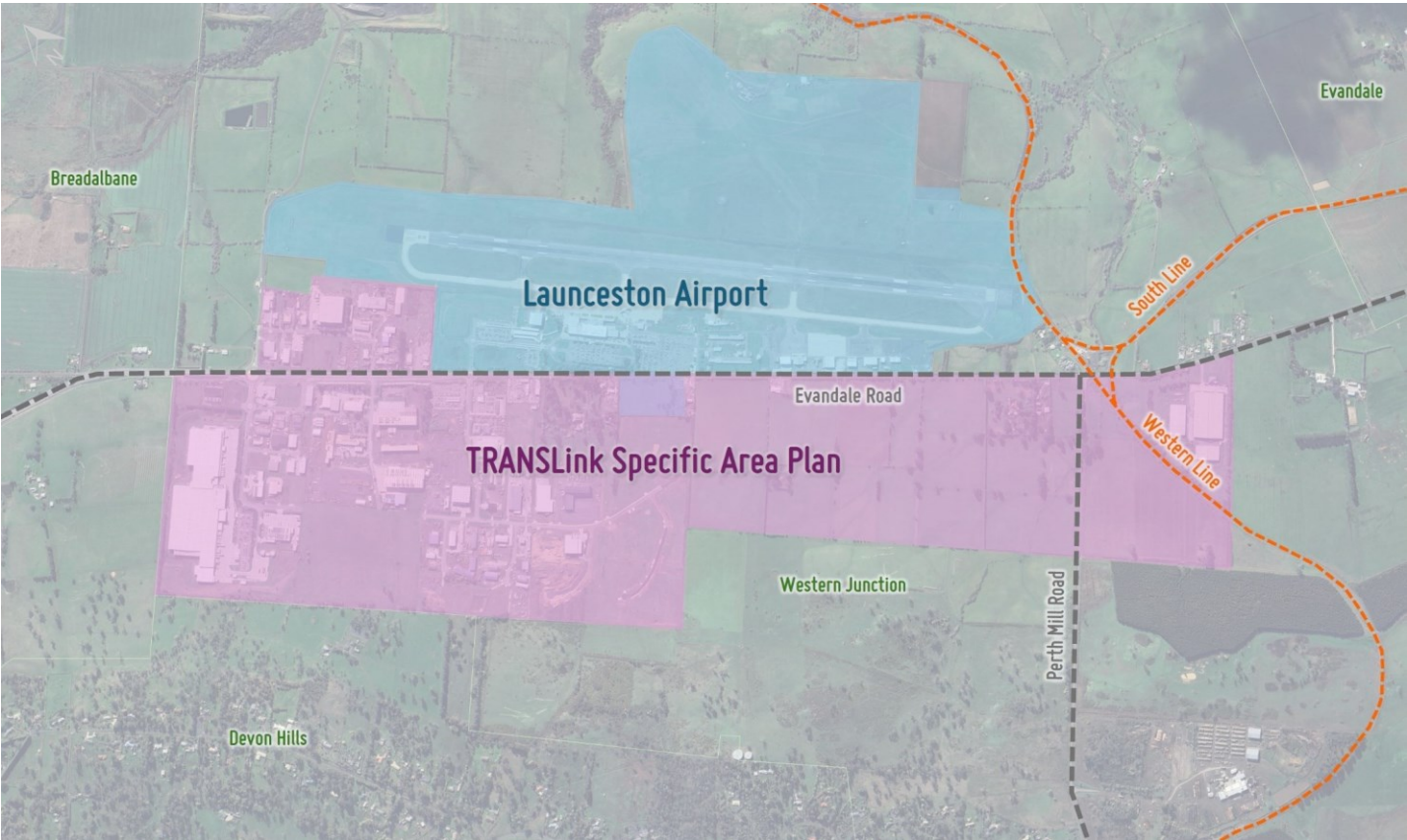
TRANSLINK INTERMODAL FACILITY

Newsletter No. 1 – August 2025



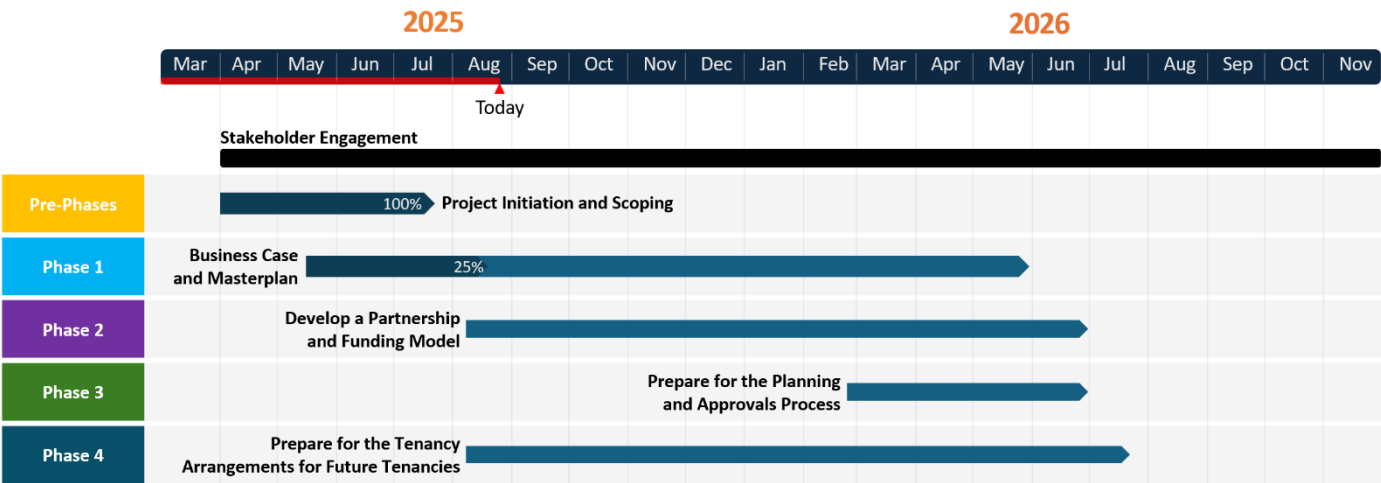
Project area

The TRANSLink Intermodal Facility is expected to be constructed in the suburb of Western Junction, chosen for its proximity to Launceston Airport and the existing TRANSLink Precinct. Western Junction is approximately 15 kilometres from the Launceston CBD. Our study area spans from the Breadalbane Roundabout to just past the intersection of Evandale Road and Perth Mill Road in Western Junction.



Project timeline

Development of the Business Case and Masterplan (Phase 1) will be completed in parallel with the development of a partnership and funding model (Phase 2). We are also starting to prepare tenancy agreements for future tenancies (Phase 4) and will start preparing for the planning and approvals process (Phase 3) once a site has been confirmed.



Project governance

Project charter



No regrets investment



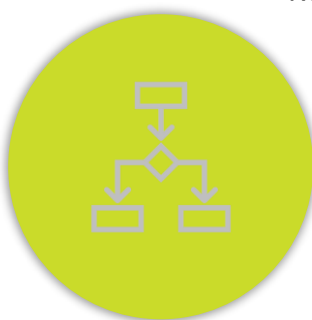
Shared goals and
visions



Trust and
collaboration



Open and transparent
communications



Clear and robust
evidence-based
approach and
decision making



Adaptive and learning-
oriented approach



Long-term
sustainability

Steering Committee

A Steering Committee has been established for this project, comprising representatives from the Office of the Coordinator-General, Infrastructure Tasmania, Northern Midlands Council, and NTDC. At least once a year the TIF Steering Committee will convene a planning forum inviting all enabling agencies to participate in a project update, ensuring a collaborative spirit is sustained across the project's delivery.

Advisory Group

The Advisory Group comprises representatives from all relevant project partners, including infrastructure providers, adjacent landowners, state and local government agencies, industrial precinct developers and tenants, and prospective anchor tenants. The Advisory Group's primary purpose is to ensure that key and affected stakeholders are appropriately engaged throughout all stages of the project and to foster advocacy for its successful delivery.

TRANSLINK INTERMODAL FACILITY

Newsletter No. 1 – August 2025



Frequently asked questions

Why do we need this facility?

The facility aims to improve the efficiency and reliability of northern Tasmania's freight network, supporting economic growth, reducing transport costs for businesses, and enhancing access to interstate and international markets. It will also contribute to environmental objectives by encouraging producers to move more freight by rail instead of road.

What are some of the benefits of the facility?

Once operational, this facility will generate a range of benefits to the community and will contribute to the Tasmanian economy by:

- ▶ Improving tourism visitation in the Launceston CBD area, as the number of heavy vehicles travelling through the area will be greatly reduced
- ▶ Reduce delivery times and freight costs, and improve supply chain resilience by reducing
- ▶ Support regional jobs and skills development, both during construction and in operation
- ▶ Entice and encourage investment from existing businesses who are looking to expand their service offering, or new businesses considering establishing distribution and storage centres in northern Tasmania
- ▶ Lower emissions and congestion by enabling more freight to move by rail

Who is delivering the project?

The project is being delivered by NTDC in partnership with the Northern Midlands Council. The Australian government is funding the initial project phases.

Why do you need to complete a business case?

A business case is required to gain further approval and funding to proceed with the construction of this project.

The business case will outline the need for the facility, consider options, analyse costs, benefits and risks, and ultimately support the investment decision. It is an important part of a project's development and will help set the project up for successful delivery.

How will stakeholders and the community be consulted on this project?

Engagement with stakeholders and the community will occur throughout all phases. Future consultation activities will include workshops, face-to-face meetings, and other in-person opportunities. Updates will be provided regularly via the project webpage and our social media platforms (once established).

To register your interest in this project, please email translink@ntdc.org.au.

To find out more about this project, scan the QR code to visit the project webpage, or contact the project team



0418 828 896



translink@ntdc.org.au



www.ntdc.org.au/projects/translink

