

Northern Midlands Council is proud to present the purpose-built Perth Early Learning Centre (PELC).

The Northern Midlands municipality has grown by 923 people according to the 2021 census data reflecting an increase of 424 families and an additional 509 dwellings.

Council recognises that the future and continual prosperity of the Northern Midlands depends largely on the services available within the community.

Early childhood education is one of the best ways to help children develop the social, emotional, and cognitive skills they need to prepare for kindergarten, primary school and beyond and when parents know their children are in a safe and healthy space, it makes returning to work easier.

Parents who are supported by Early Learning Centres can engage in their own professional and social endeavours, which also supports their wellbeing and local communities.

Opening 19 June 2023, PELC provides for 46 long day care places and 40 after school care places, for children from Perth, Evandale, Devon Hills, Longford, Cressy, Bishopsbourne, and the surrounding rural properties. That's 86 places in total.

Featuring four specialised rooms (0 years to 18months; 18months to 3 years; 3 years to 5 years; and before school, after school and vacation care 5 years to 12 years), the facility also boasts a separate meeting room, staff room, laundry, and kitchen.

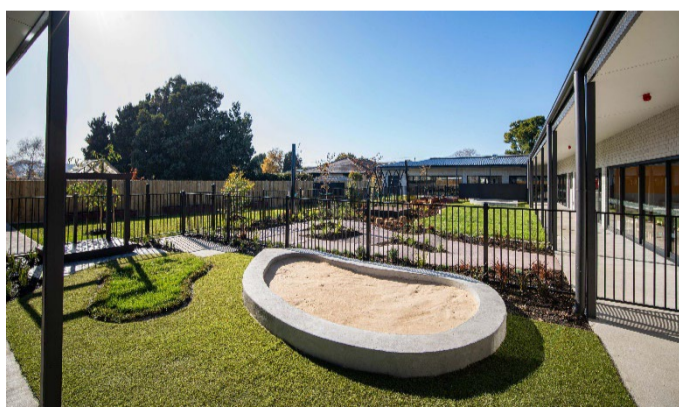
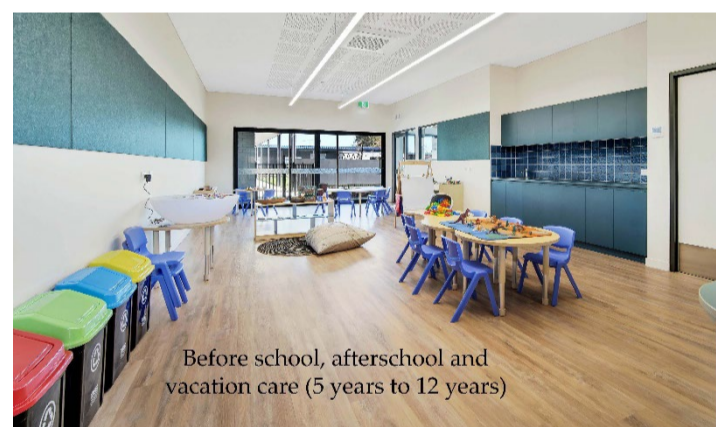
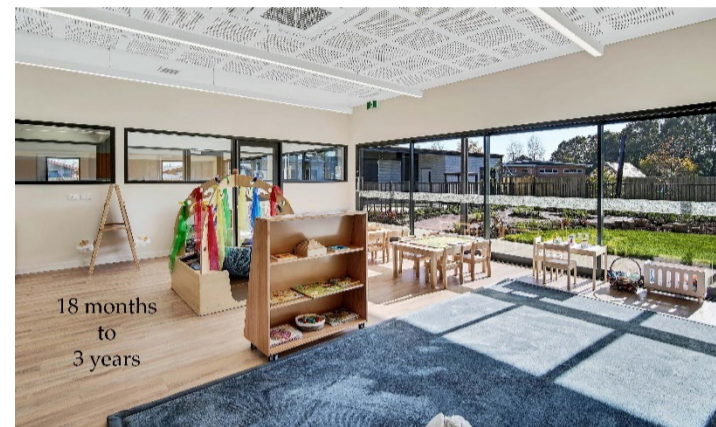
By working cooperatively with and across its communities and organisations, Northern Midlands Council can achieve its vision to be "an enviable place to live, work and play" while supporting local business and industry in an innovative and sustainable manner.

Designed by N2H and constructed by Rosier Construction, this \$3.7 million dollar project, would not have been possible without our external funding partners and I would like to acknowledge that Northern Midlands Council received federal government funding from the Local Roads and Community Infrastructure program (\$1,121,874m), and Community Development Grants Program (\$2,600,000m).

Northern Midlands Council contributed the land which was purchased from Phillip and Cornelia Dell.

I trust that both our families and our staff will enjoy this fantastic facility for many years to come.

Mary Knowles OAM, Mayor



Enquiries should be directed to:

Child Care Director, Kate Lee

Phone: (03) 6397 7330

Email:

childcaredirector@nmc.tas.gov.au

**Reminder: Future of Local Government Review: Make your voice heard.
Contact your local politician and Councillors.**

For more information: <https://northernmidlands.tas.gov.au/council/your-council/about-us#future-of-local-government-review>