

**MINUTES FOR THE MEETING OF THE LLDC**  
**WEDNESDAY 8<sup>th</sup> MAY 2024. COMMENCING AT 5.30 PM**  
**HELD AT THE LONGFORD MEMORIAL HALL MEETING ROOM.**

**MINUTES**

1. **PRESENT** – Tim Flanagan (chair), Annette Aldersea, Bronwyn Baker, Doug Bester, Jo Clarke, Dennis Pettyfor, Neil Tubb.
2. **IN ATTENDANCE** –
3. **APOLOGIES** – Peter Munro, Cr Matthew Brooks, Cr Dick Adams.

**4. DECLARATION OF ANY PECUNIARY INTEREST BY A MEMBER OF A SPECIAL COMMITTEE OF COUNCIL**

In accordance with the provisions of the *Local Government Act 1993*, a member of a Special Committee must not participate in any discussion or vote on any matter in respect to which the member:

- a) has an interest; or
- b) is aware or ought to be aware that a close associate has an interest.

A member has an interest in a matter if the matter was decided in a particular manner, receive, or have an expectation of receiving or likely to receive a pecuniary benefit or pecuniary detriment.

No declaration of any financial interest was declared by any person present.

**5. ACKNOWLEDGEMENT OF COUNTRY**

We acknowledge and pay our respects to the Tasmanian Aboriginal Community as the traditional and original owners, and continuing custodians of this land on which we gather today and acknowledge Elders – past, present, and emerging.

**6. CONFIRMATION OF MINUTES**

The minutes of the meeting of the Longford Local District Committee held on 3<sup>RD</sup> APRIL 2024 confirmed as a true and correct record of proceedings.

Moved – Bron Baker. Second – Jo Clarke. Carried.

**7. BUSINESS ARISING FROM MINUTES**

## **7.PROMOTIONAL ISSUES:**

### **7.1. Signage for Longford Roundabout.**

LLDC received notification from Council that the Department of State Growth will not approve the installation of the Longford roundabout sign until their stipulated conditions have been met. One condition is the removal of two of the entry signs at the northern entrance into Longford. The LLDC held lengthy discussion as to why after many years of these signs being in place, it should become an issue for DSG. Council suggests the blue “Welcome to Longford” sign on Tannery Road be moved to the intersection of Woolmers Lane and Wellington Street, the LLDC agree to this suggestion.

Further discussion re: which other entry sign could be removed.

The LLDC was unanimous that it strongly objects to the removal of the significant stone “Longford” wall near the railway line. Committee members believe it has been in place for 40 – 50 years and must not be removed under any circumstances.

The LLDC suggests the second sign that could be removed is the first sign from the east (Perth) on Illawarra Road – “Welcome to Longford”, as this will be removed anyway when DSG carry out planned safety roadworks on Mountford Hill before the bridges. The removal of this sign still reduces the overall number of signs when entering towards Longford.

### **7.2. Motor racing themed Street Sign in Longford.**

Included on the LLDC Budget Submission to the NMC for 2024-2025. Monitor.

### **7.3. Visitors Information Shelter, Village Green Landscaping - corner of Archer and Wellington Streets.**

Annette Aldersea raised landscaping the area with the Longford Garden Club at their April meeting and asked for its support, to which the club agreed. A small working group has been formed, which met on site with Leigh McCullagh NMC, 18<sup>th</sup> April. Mr McCullagh agreed Council would remove the existing pinebark and provide compost and water to the area. The group thanks Mr McCullagh for his time and support for the project. The working group will select and plant new plants in Spring.

### **7.4. Directory of Clubs and other organizations and their branches in Longford - including sign.**

Neil Tubb and Annette Aldersea met with Fiona Dewar, NMC, 11<sup>th</sup> April to discuss the project. The meeting was very positive with the decision to place an organisations sign on or near the visitor information booth in the Village Green, and a second sign near the Woolmers Lane end of Wellington Street. Ms. Dewar has provided a quotation of \$35 - \$40 for each club/organisation emblem. Neil Tubb and Annette Aldersea to draft a letter to present to organisations/clubs re: informing them of the proposal, cost and seeking their interest in participation.

### **7.5. New Promotional Signage either side of Longford Roundabout on Illawarra Road. Place on hold considering DSG stance to Longford signage.**

## **8.SAFETY & AESTHETIC ISSUES:**

### **8.1. Pullover area/Viewing Platform – Alternative Location.**

LLDC – Bron Baker and Annette Aldersea revisited Pateena Road for alternative locations 30<sup>th</sup> April. A revised report – V3 has been prepared and circulated to LLDC members. The report includes an alternative suggestion for a pullover point on Woolmers Lane. LLDC members to consider the report and discuss it further at its next meeting.

### **8.2. Wellington & Marlborough Streets Intersection (Sticky Beaks) – Council has written to the Minister.**

LLDC discussed the lengthy delay since community members met with Minister Michael Ferguson and Garry Hills DSG, onsite 9<sup>th</sup> March 2023, to discuss the safety concerns regarding the large concrete planter boxes. The Minister gave his assurance at this meeting that an independent traffic study of the intersection would take place. Further discussion re: recent accident where a vehicle collided with two of the boxes, dislodging steel fascia panels and chunks of concrete was strewn across the footpath and general area.

#### **MOTION:**

LLDC notes with concern the increased traffic flow through Longford and with the recent accident where a vehicle crashed into two of the concrete boxes at the Wellington and Marlborough Streets intersection, and requests that the NMC again contact the Minister and Department of State Growth for an update on the departments inaction.

Moved – Bron Baker. Second – Doug Bester. Carried.

### **8.3. Environmental & noxious weeds.**

Annette Aldersea tabled the notice received from the NMC that a Public Forum regarding the Northern Midlands Weed Management Strategy is being held Wednesday 29<sup>th</sup> May 2024, 3-5pm in the Longford War Memorial Hall. Those wishing to attend to RSVP their attendance.

Annette Aldersea to recirculate the notice to LLDC members.

### **8.4. Vision Impaired Markers.**

Continue to monitor progress.

### **8.5. Wellington Street and Marlborough Street speed limit reduction.**

NMC Executive assistant sent letter to the Minister 12<sup>th</sup> March 2024.

Resident Derek who has mobility issues raised his concerns about the speed limit on the main street of Longford with Council via a Customer Request Form.

Tim Flanagan to meet with Derek. Continue to monitor.

### **8.6. Pedestrian Safety Concerns – Wellington and Marlborough Streets.**

LLDC Motion tabled at Council meeting 22.04.2024 – Minute NO: 24/0128

DECISION: “That Council note the concerns raised by the Local District Committee and consider the relocation/installation of a refuge in the vicinity of the library in future budget deliberations”. Residents continue to raise safety concerns for pedestrians.

**8.7. Illawarra Road West of Roundabout – Safety Concerns.**

LLDC Motion tabled at NMC meeting 18<sup>th</sup> March 2024.

Council DECISION – MINUTE NO. 24/093

Letter drafted by Executive Assistant to be sent to DSG.

Monitor progress of request.

**9. TOWN IMPROVEMENT ISSUES**

**9.1. Longford Racecourse Heritage signage for the Cracroft and Anstey Street corner.**  
Still waiting on crown approval for the signage etc. Monitor.

**9.2. Longford Streetscape – Wellington Street upgrade – redirection of funds.**  
Council Minute No: 24/0122 - Council has approved redirection of the funds to a shared pathway from Longford Village Green to the Mill Dam boundary only on Council land , plus improvements to dog park, installation of Longford Railway Bridge Pillars, Installation of security fencing along north boundary of dog park and railway line to river. LLDC concerned no community consultation.

Annette Aldersea to email Vivien Tan NMC to ask if there will be community consultation before project proceeds.

**9.3. Shower for Public Use – Longford Memorial Hall.**

Works are currently underway in the existing parent room toilet facing the Green to install the public shower. Shower also being installed in new parent room at rear of hall.

Annette Aldersea to email Vivien Tan NMC to ask how the showers will be operated - i.e. Token and or card?

Continue to monitor.

**9.4. “Mulga Fred” – The Poem.**

Discussions re: installation of a QR Code to include the poem and possibly other information at the Fred Davies Memorial. Tim Flanagan to investigate other information that could be included and report back to next LLDC meeting.

**9.5. Dual Naming of Longford Streets.**

Tim Flanagan to provide a report on William Street name at the next LLDC meeting. Also a suggestion that an indigenous garden memorial be considered by the committee.

**9.6. Longford Lawn Cemetery - Landscaping Improvements.**

LLDC members Bron Baker and Annette Aldersea visited the Longford Lawn Cemetery on 30<sup>th</sup> April. LLDC prepared a report on improving the landscaping and therefore the amenity of the cemetery.

**MOTION:**

LLDC recommend that the NMC consider the LLDC May 2024 Report attached and action the LLDC proposal to improve landscaping and soften amenity at the Longford Lawn Cemetery.

Moved – Annette Aldersea. Second – Bron Baker. Carried.

**9.7. EV Charging Site in Longford.**

Continue to monitor progress.

**9.8. New Public Toilets Marlborough Street.**

Proposed location at rear of car park next to Harcourts.

Jo Clarke has spoken to Harcourts, they have no objection to toilets if they will be maintained by Council, would also prefer that CCTV cameras are installed.

Jo still to speak to property owner. Will report back to next meeting.

**10.RECREATIONAL ISSUES:**

**10.1. Deterioration of Facilities at Mill Dam.**

LLDC included ongoing maintenance and upgrades in its budget requests to Council.

Council is waiting on a further concept plan to be prepared and presented to the Councillors for endorsement prior to public consultation. Monitor.

**10.2. Bike Rack outside JJ's Bakery.**

No progress. Remove from Agenda can be returned at later date.

**10.3. The Missing Link – Lack of bikeways between Longford roundabout and Pateena Road.**

Council considered LLDC Motion at 19.02.2024 meeting.

Included on NMC Action Items list – NMC Minutes 18<sup>th</sup> March 2024.

Council continues to work on Northern Midlands Shared Pathway Network Project.

Monitor.

**11.HERITAGE ISSUES:**

**11.1. Significant Trees Register.**

Vivien Tan NMC advised that if the LLDC have any trees that we would consider being included in the Significant Trees Register, to please create a consolidated list. The aim of which is to identify trees and vegetation of high community value and significance, worthy of protection by being included in the Significant Trees List.

There is also the National Trust Tree Nomination Form which can be found at:

[National Trust - Nomination Form \(trusttrees.org.au\)](https://www.nationaltrust.org.au/trusttrees) for more information.

Monitor progress.

**12.GOVERNANCE ISSUES:**

**12.1. Review of MOU between NMC & LDC's.**

Current committee members will need to re-apply for a position on the committee.

Applications must be received by Council by close of business 10<sup>th</sup> June 2024.

**12.2. Project Allocation for funds of \$2,500 in lieu of secretarial support for LLDC in 2023.**

Ongoing for Landscaping at the Longford Racecourse heritage sign and outside the Visitor Information Shelter Village Green. Continue to monitor.

**12.3. LLDC future Meeting Location.**

LLDC now meeting in the Longford Memorial Hall. Remove from Agenda.

**12.4. Registry of Action.**

LLDC has decided to prepare and maintain its own Registry of Action.  
Annette Aldersea will endeavor to prepare for next LLDC meeting.

**12.5. LLDC Budget Allocation Submission.**

LLDC Budget Allocation Submission emailed to Council and LLDC members 31<sup>st</sup> March 2024 following the LLDC Special Meeting 20<sup>th</sup> March 2024. Monitor progress.

**13. REPORTS FROM SUB-COMMITTEES:**

**13.1.** Railway Committee – No report (Cr Adams not present).

**13.2.** Longford Legends – Next meeting to be held in June. Establishing a “criteria tool”.

**13.3.** Town Hall Committee – No new report.

**13.4.** Arts and Cultural Committee – No new report.

**13.5.** Norfolk Plains History Committee – Annette Aldersea tabled Minutes of the NPHC April 10<sup>th</sup> 2024 – which confirmed that the NPHC has been dissolved to make way for the newly incorporated Longford-Norfolk Plains History Society Inc. Therefore, there will be no further reports to the LLDC. The NPHC Minutes also thanked both NMC and the LLDC for their support.

**14. NEW BUSINESS:**

**14.1.** Tim Flanagan – The official opening plaque for the Longford Memorial Hall appears to be missing since the hall redevelopment works. Tim to enquire as to its whereabouts.

**15. NMC Meeting dates for 2024**

22<sup>nd</sup> April

20<sup>th</sup> May

24<sup>th</sup> June

22<sup>nd</sup> July

19<sup>th</sup> August

16<sup>th</sup> September

21<sup>st</sup> October

18<sup>th</sup> November

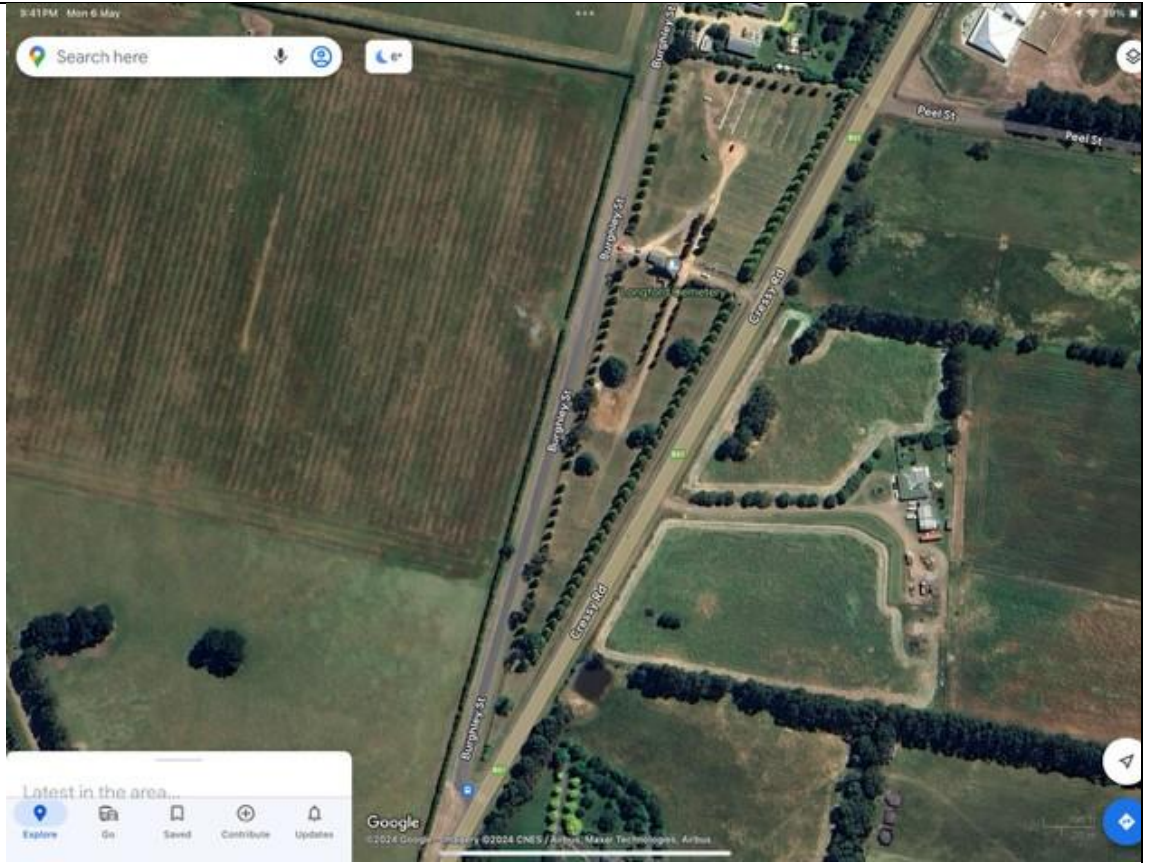
9<sup>th</sup> December

**16. CLOSURE**- 7.09pm.

**17. NEXT LLDC MEETING** – WEDNESDAY 5<sup>th</sup> JUNE 2024 – Longford Memorial Hall Meeting Room.

Longford Local District Committee (LLDC)  
- Longford Lawn Cemetery  
Landscaping improvement Proposal – V1  
MAY 2024  
(following LLDC visit 30<sup>th</sup> April 2024)

**Longford  
Lawn  
Cemetery  
– Aerial  
Photo.**



Southern End.  
Suggest no  
works needed  
at this stage.  
Existing  
cypress hedge  
around  
southern  
boundary and  
tree lined  
avenue.  
No gravesites  
currently.



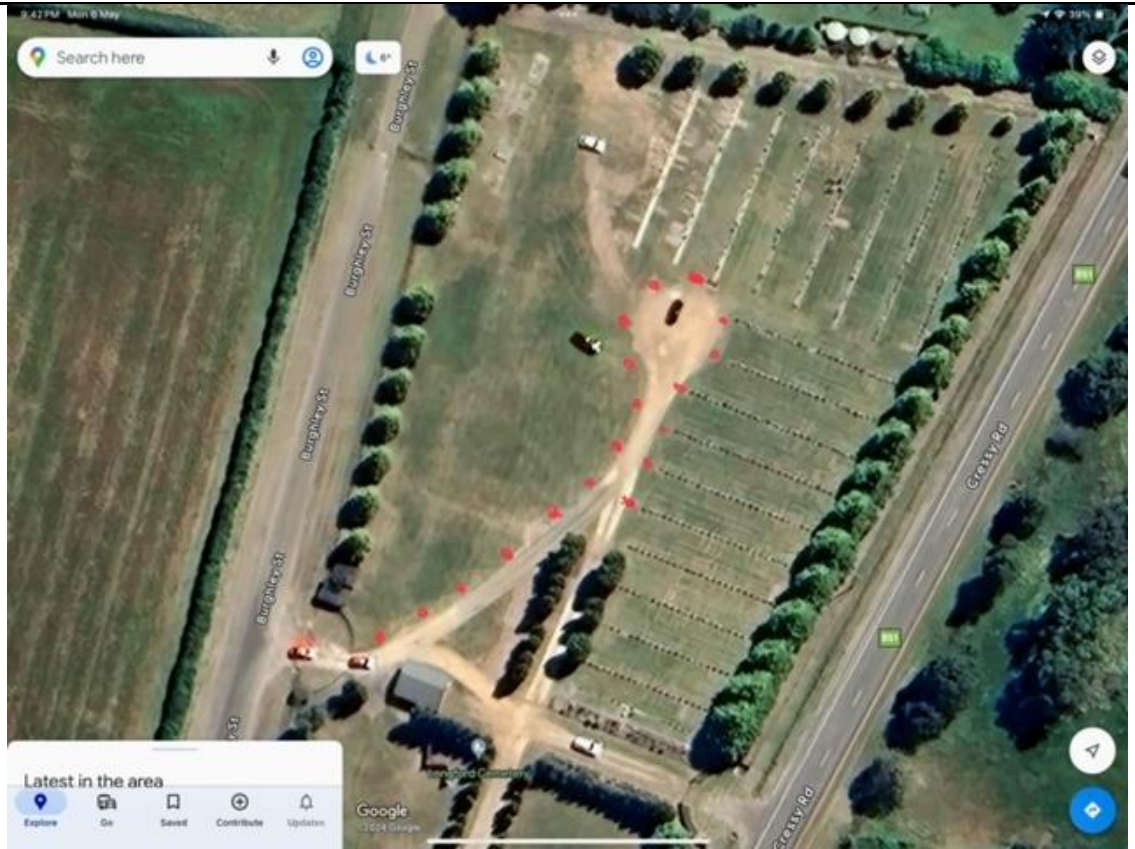
Northern End.  
Trees around  
perimeter  
only.  
Very open  
and sterile.  
Area needs  
to be  
softened to  
be more  
welcoming for  
those visiting  
loved ones.



Suggest a tree  
next to the  
existing  
bench seat, at  
the end of the  
north circular  
driveway.  
Also suggest  
another seat  
in the  
northern end.



Suggest an avenue of trees around remainder of northern end circular driveway. Highlighted in Red. Not a full hedge. Not cypress trees.



Suggested options of Trees for planting around northern circular driveway.

### *Prunus cerasifera* **'Oakville Crimson Spire'** Ⓢ



A Fleming's introduction of a selection developed in Australia. Proven to be very popular as a garden plant & as a street tree. This exciting new form of *Prunus cerasifera* has a fastigiata habit, richly coloured foliage and attractive spring blossom. An excellent urban tree, its hardy and adaptable nature makes it an ideal garden, screening and street tree especially where lateral space is restricted.

### *Lagerstroemia indica* *x L. fauriei* **'Natchez'** **Indian Summer®**



A very popular cultivar with excellent white flowers and highly attractive exfoliating bark. The extremities of the branches can become pendulous giving a slightly weeping effect which is made more dramatic with the production of large white inflorescences. *Lagerstroemia* 'Natchez' is an adaptable tree, suitable for a wide range of landscape settings.

Tree options cont'd.



Cremation Memorial Wall.  
Suggest simple planting in garden bed at base of wall.  
Perhaps a ground cover i.e. Thyme or similar, that can be walked on.



Option for  
Planting at  
base of  
Memorial  
Wall.

The screenshot shows a mobile website interface for 'woodbridgenursery.com.au'. The top navigation bar includes links for HOME, PERENNIAL FLOWERS, NEW PLANTS, GRASSES, EDIBLES AND MORE, MAIL ORDER INFORMATION, and CONTACT US. The breadcrumb trail is Home > Herbs and Medicinal > Thyme Lawn White. The main product image shows a dense patch of small white flowers. To the right of the image, the product name 'Thyme Lawn White' is displayed, along with a description: 'Prostrate white thyme only 1cm high, plant as lawn or amongst stones, gravel or pavers for ground cover.' The price is listed as '\$8.50 Tax included'. Below the price is a quantity selector set to '1' and an 'Add to cart' button. A smaller thumbnail image is visible below the main image. The 'DESCRIPTION' and 'PRODUCT DETAILS' tabs are active. Under 'PRODUCT DETAILS', there is a 'Data sheet' table with the following information:

Light requirement	full sun
Height range	short (0 - 20cm)
Drought resistance	very good
Frost tolerance	extremely good
Flowering time	summer

At the bottom of the product page, it says '16 OTHER PRODUCTS IN THE SAME CATEGORY:' with a right-pointing arrow.

# MINUTES

## NORFOLK PLAINS HISTORY COMMITTEE MEETING

Wednesday, April 10, 2024, Library Space, Lyttleton Street, Longford

**Open meeting:** Chair Annette Aldersea opened the meeting at 2.06pm and welcomed those present.

**Present:** Annette Aldersea (chair), Tim Flanagan, Neil Tubb, Ken Richards (National Trust rep') Rob Aldersea, Paul Kenny, Alison Andrews (secretary), Dee Alty (arrived late).

**Apologies:** Jane Hanssen

**Minutes:** Minutes from the last meeting were received and passed as a true reflection of proceedings. **Moved, Paul Kenny. Seconded, Neil Tubb. Carried unanimously.**

### **Business:**

1. That the Norfolk Plains History Committee be dissolved to make way for the newly incorporated Longford-Norfolk Plains History Society. **Moved Tim Flanagan, Seconded, Ken Richards.** Secretary Alison Andrews agreed to inform the Longford Local District Committee, of which the history committee is a sub committee and the Northern Midlands Council, that the committee had moved to dissolve and to ensure that the Local District Committee received a copy of these minutes. **Carried unanimously.**
2. That letters be sent to both the Longford Local District Committee and the Northern Midlands Council, thanking them for their support to date. **Moved Tim Flanagan. Seconded, Paul Kenny. Carried unanimously.**

**Thanks:** Chair Annette Aldersea thanked those present for their commitment to the future of the group. She said that it had been a very busy year and it was wonderful that everyone had stuck with it to this point.

**Meeting closed:** Chair Annette Aldersea closed the last meeting of the Norfolk Plains History Committee, at 2.15pm.