

# **CONVICT BRICK TRAIL – CAMPBELL TOWN**

## **MEMO**

*Responsible Officer:* Maree Bricknell, Acting General Manager

*Report prepared by:* Trent Atkinson - Project & Building Compliance Manager & Kristy Nutting – Executive Officer

### **PURPOSE OF MEMO**

The purpose of this memo is to support Council’s deliberations regarding the Notice of Motion seeking reinstatement of the Convict Brick Trail to its original continuous alignment along High Street, Campbell Town. The information presented outlines the current project status, the implications of altering the approved design, and the risks and responsibilities associated with reinstatement.

### **INTRODUCTION/BACKGROUND**

The Convict Brick Trail project is presently being delivered in strict accordance with the design and scope approved by Council. All decisions, community communication and project documentation to date reflect this endorsed design. Importantly, the works that are underway do not impose any additional cost on Council and have progressed without incident. The installation at the corner of Queen Street, which has been in place since November 2021, has operated for four years without generating complaints or safety concerns and has therefore informed and validated the approach embedded in the approved project design. Continuing with the planned segmented configuration ensures clarity and continuity for residents, businesses and other stakeholders who have engaged with the project under the expectation that works would proceed as previously endorsed.

Where new footpaths have been poured, ship shapes have already been added and temporarily filled. The plan was to wait until closer to the end of the works to re-place the bricks to further ensure that they were not damaged during construction works.



# **CONVICT BRICK TRAIL – CAMPBELL TOWN**

## **MEMO**



Large sections of the new footpath have already been poured, meaning that portions of recently completed infrastructure would need to be dismantled, removed, and retrofitted to accommodate the reinstated line of bricks. This approach is considerably more expensive than installing bricks concurrently during footpath construction. Current estimates indicate that reinstatement at this stage would result in approximately \$127,751 of unbudgeted expenditure. If reinstatement is deferred until completion of Stage One, the costs are projected to rise to around \$180,506 due to the increased amount of concrete requiring retrospective modification. These figures reflect the clear financial difference between embedding bricks “as you go” and the more labour intensive, disruptive and costly process of modifying completed footpaths.

Beyond these direct financial impacts, modifying or suspending the works at this stage also introduces notable contractual and operational risks. Any pause, redesign or re-sequencing of works is likely to trigger extension-of-time claims from the contractor, along with additional demobilisation and remobilisation costs. Furthermore, a change in scope at this point in the project may create prolonged disruption for Campbell Town businesses, residents and visitors, particularly if these changes push the overall program into less favourable construction periods. The risk of missing the optimal pavement sealing window increases under such circumstances, and Council may face additional delay-related expenses associated with rising material costs, labour shortages or contractor standby rates.

Although recent feedback indicates that some community members would prefer the reinstatement of the continuous trail, it is important to note that concerns regarding the Convict Brick Trail were raised only briefly by a very small number, during the 2025 Campbell Town drop-in session. Earlier, more extensive community engagement, particularly the consultation conducted by GHD in 2016 as part of the broader streetscape redesign, did not identify the brick trail alignment as an issue. While reinstatement may provide opportunities to reposition some bricks to locations that are safer or more practical for pedestrians and businesses, this would nevertheless represent a departure from the design that was previously approved and publicly communicated.

# **CONVICT BRICK TRAIL – CAMPBELL TOWN**

## **MEMO**

Continuing with the approved segmented design allows the project to proceed without additional cost, risk or delay and remains consistent with prior community consultation and Council decisions. Reinstating the original continuous trail alignment is technically achievable and may meet the preferences of some community members, but doing so would require unbudgeted expenditure, disruption to the project timeline, and a heightened degree of risk. Council must therefore carefully consider these competing factors in determining the most appropriate course of action for the Convict Brick Trail.

The illustration below demonstrates how reinstating the Convict Brick Trail would require careful consideration of the precise placement of each brick within the restored alignment.



**Figure 1. On-street dining covering Convict Brick Trail**



**Figure 2. On-street trading close to Convict Brick Trail**



## CONVICT BRICK TRAIL – CAMPBELL TOWN

### MEMO



Figure 3. On-street dining covering Convict Brick Trail



Figure 4. Convict Brick Trail across property pedestrian access

# CONVICT BRICK TRAIL – CAMPBELL TOWN

## MEMO



Figure 5. Convict Brick Trail across business property pedestrian access

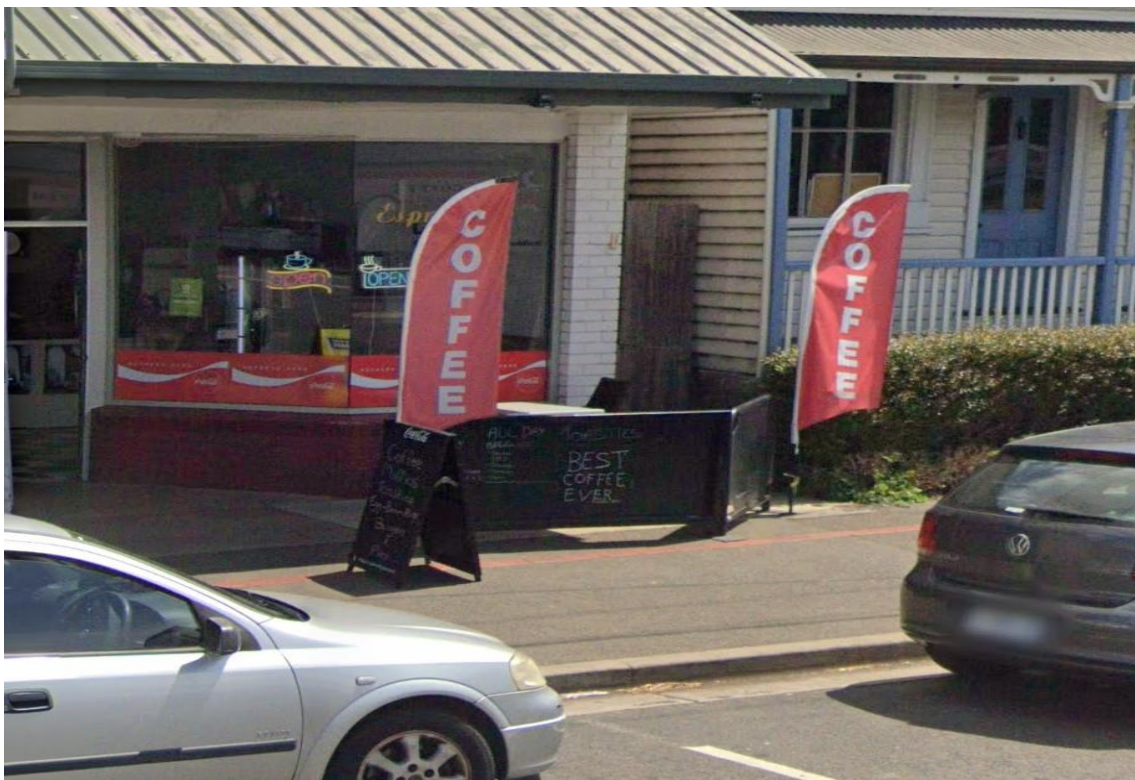


Figure 5. On-street footpath trading sign over Convict Brick Trail

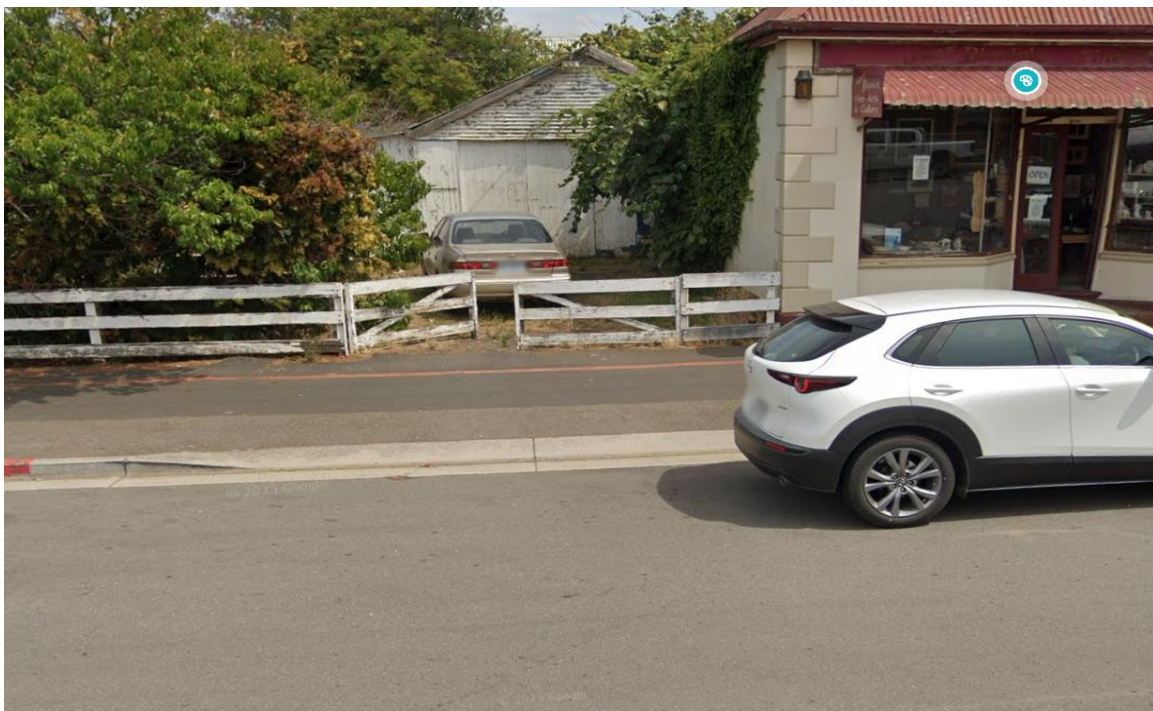


# **CONVICT BRICK TRAIL – CAMPBELL TOWN**

## **MEMO**



**Figure 6. Convict Brick Trail across business property pedestrian and vehicle access**



**Figure 7. Convict Brick Trail across property vehicle access**