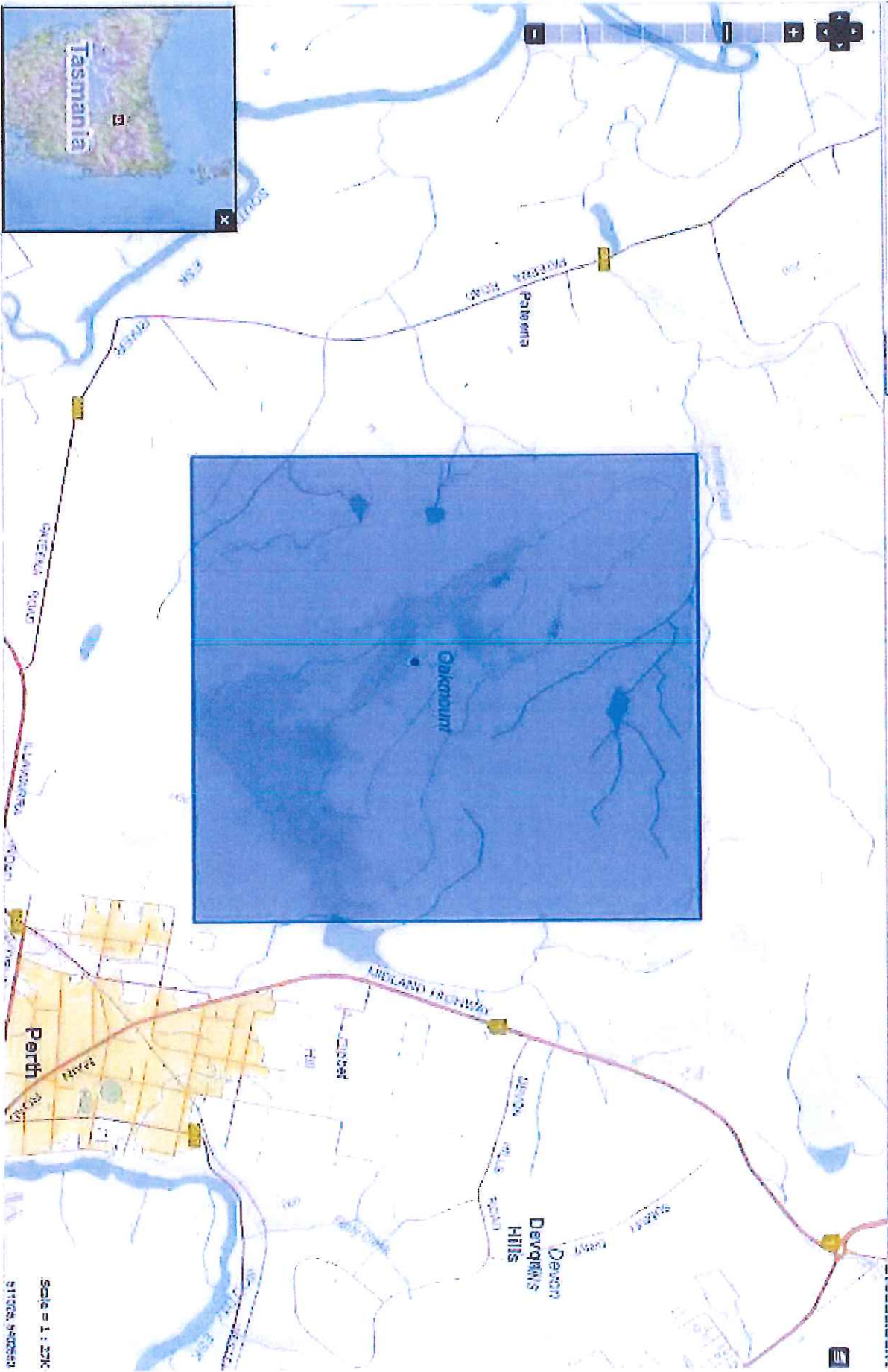




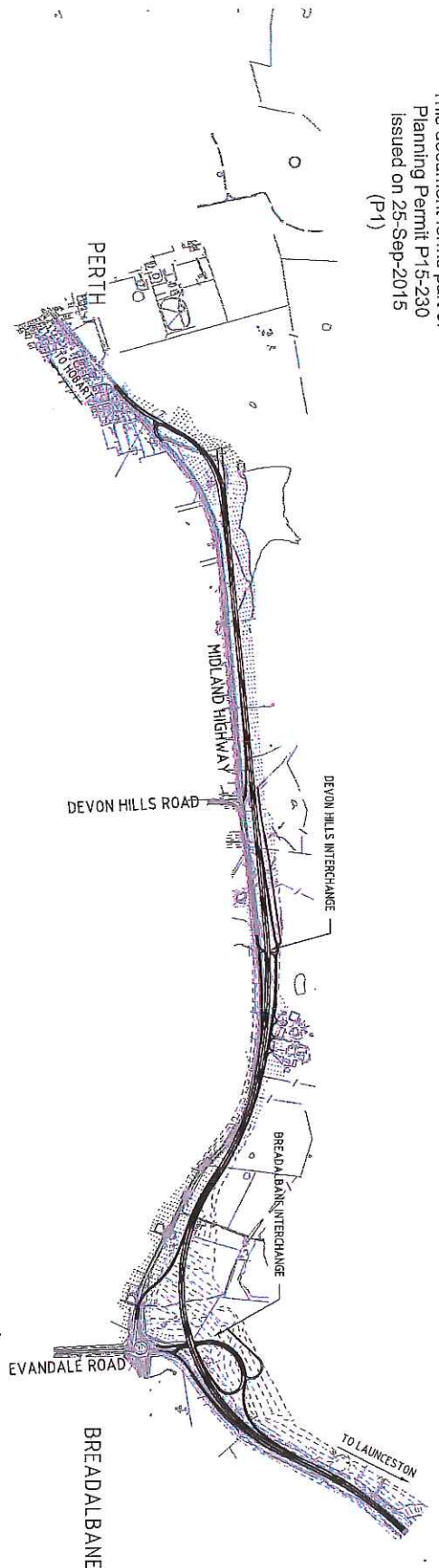
Search for Names

Oakmount

Page Search Clear search



Scale = 1:27K
511500, 548250



SHEET INDEX

SHEET No.	REV No.	SHEET TITLE
0000	B	COVER SHEET
0001	B	INDEX SHEET
0002	C	LEGEND
0010	B	TYPICAL SECTIONS - SHEET 1
0011	B	TYPICAL SECTIONS - SHEET 2
0012	B	TYPICAL SECTIONS - SHEET 3
0040	C	OVERALL PLAN
0041	C	GENERAL ARRANGEMENT PLAN - SHEET 1
0042	C	GENERAL ARRANGEMENT PLAN - SHEET 2
0043	C	GENERAL ARRANGEMENT PLAN - SHEET 3
0044	C	GENERAL ARRANGEMENT PLAN - SHEET 4
0045	C	GENERAL ARRANGEMENT PLAN - SHEET 5
0046	C	GENERAL ARRANGEMENT PLAN - SHEET 6
0047	C	GENERAL ARRANGEMENT PLAN - SHEET 7
0048	C	GENERAL ARRANGEMENT PLAN - SHEET 8
0049	C	GENERAL ARRANGEMENT PLAN - SHEET 9
0050	C	GENERAL ARRANGEMENT PLAN - SHEET 10
0051	C	GENERAL ARRANGEMENT PLAN - SHEET 11
0052	C	GENERAL ARRANGEMENT PLAN - SHEET 12
0053	C	GENERAL ARRANGEMENT PLAN - SHEET 13
0054	C	GENERAL ARRANGEMENT PLAN - SHEET 14
0055	C	GENERAL ARRANGEMENT PLAN - SHEET 15
0056	C	GENERAL ARRANGEMENT PLAN - SHEET 16
0057	C	GENERAL ARRANGEMENT PLAN - SHEET 17
0060	B	LONGITUDINAL SECTION - NEW HIGHWAY DUPLICATION (HC00) - CH.5600 TO CH.6300
0061	B	LONGITUDINAL SECTION - NEW HIGHWAY DUPLICATION (HC00) - CH.6600 TO CH.6700
0062	B	LONGITUDINAL SECTION - NEW HIGHWAY DUPLICATION (HC00) - CH.6700 TO CH.7320

SHEET INDEX

SHEET No.	REV No.	SHEET TITLE
0063	B	LONGITUDINAL SECTION - NEW HIGHWAY DUPLICATION (HC10) - CH.7320 TO CH.7940
0064	B	LONGITUDINAL SECTION - NEW HIGHWAY DUPLICATION (HC10) - CH.7940 TO CH.8560
0065	B	LONGITUDINAL SECTION - NEW HIGHWAY DUPLICATION (HC10) - CH.8560 TO CH.9180
0066	B	LONGITUDINAL SECTION - NEW HIGHWAY DUPLICATION (HC10) - CH.9180 TO CH.9800
0067	B	LONGITUDINAL SECTION - NEW HIGHWAY DUPLICATION (HC10) - CH.9800 TO CH.10420
0068	B	LONGITUDINAL SECTION - NEW HIGHWAY DUPLICATION (HC10) - CH.10420 TO CH.11040
0071	B	LONGITUDINAL SECTION - JUNCTION TO EXISTING MIDLAND HIGHWAY (HC20)
0073	B	LONGITUDINAL SECTION - DEVON HILLS INTERCHANGE - NORTHBOUND OFF-RAMP (HC50)
0074	B	LONGITUDINAL SECTION - SERVICE ROAD & NORTHBOUND ON-RAMP (HC60) - SHEET 1
0075	B	LONGITUDINAL SECTION - SERVICE ROAD & NORTHBOUND ON-RAMP (HC60) - SHEET 2
0076	B	LONGITUDINAL SECTION - SOUTHBOUND OFF-RAMP (HC70)
0077	B	LONGITUDINAL SECTION - DEVON HILLS INTERCHANGE - WESTERN ACCESS TRACK (HC80)
0078	B	LONGITUDINAL SECTION - DEVON HILLS INTERCHANGE - SOUTHBOUND ON-RAMP (HC90)
0079	B	LONGITUDINAL SECTION - BREADALBANE INTERCHANGE - UNDERPASS ROAD & NORTHBOUND ON-RAMP (HC40) - SHEET 1
0080	B	LONGITUDINAL SECTION - BREADALBANE INTERCHANGE - UNDERPASS ROAD & NORTHBOUND ON-RAMP (HC40) - SHEET 2
0081	B	LONGITUDINAL SECTION - BREADALBANE INTERCHANGE - UNDERPASS ROAD & NORTHBOUND OFF-RAMP (HC50) - SHEET 1
0082	B	LONGITUDINAL SECTION - BREADALBANE INTERCHANGE - UNDERPASS ROAD & NORTHBOUND OFF-RAMP (HC50) - SHEET 2
0083	B	LONGITUDINAL SECTION - BREADALBANE INTERCHANGE - SOUTHBOUND OFF-RAMP (HC60)
0084	B	LONGITUDINAL SECTION - BREADALBANE INTERCHANGE - SOUTHBOUND ON-RAMP (HC70)
0090	C	DEVON HILLS UNDERPASS - GENERAL ARRANGEMENT
00920	B	BREADALBANE UNDERPASS - GENERAL ARRANGEMENT

<p>SCALES</p>				<p>DESIGNED BY: CAJONITY</p>	
<p>DA SUBMISSION</p>		<p>K.B. 07.08.2015</p>		<p>REVIEWED BY: [Signature]</p>	
<p>PRELIMINARY DESIGN ISSUE</p>		<p>K.B. 16.03.2015</p>		<p>Department of State Growth</p>	
<p>Amendment Description</p>		<p>Initial</p>		<p>MIDLAND HIGHWAY (A0087) PERTH TO BREADALBANE DUPLICATION</p>	
<p>AS original</p>		<p>Coordinate System: MGA Zone 55</p>		<p>CONTRACT No.</p>	
<p>This sheet may be prepared using colour and may be incompatible if copied</p>		<p>Height Datum: A.M.D.</p>		<p>DRAWING No. 32-17828-C001-1449</p>	
				<p>PRINTED DATE 07-Aug-15 5:06 PM</p>	
				<p>REGISTRATION NUMBER A0087.026</p>	
				<p>SHEET No. 0001</p>	
				<p>REVISION B</p>	

